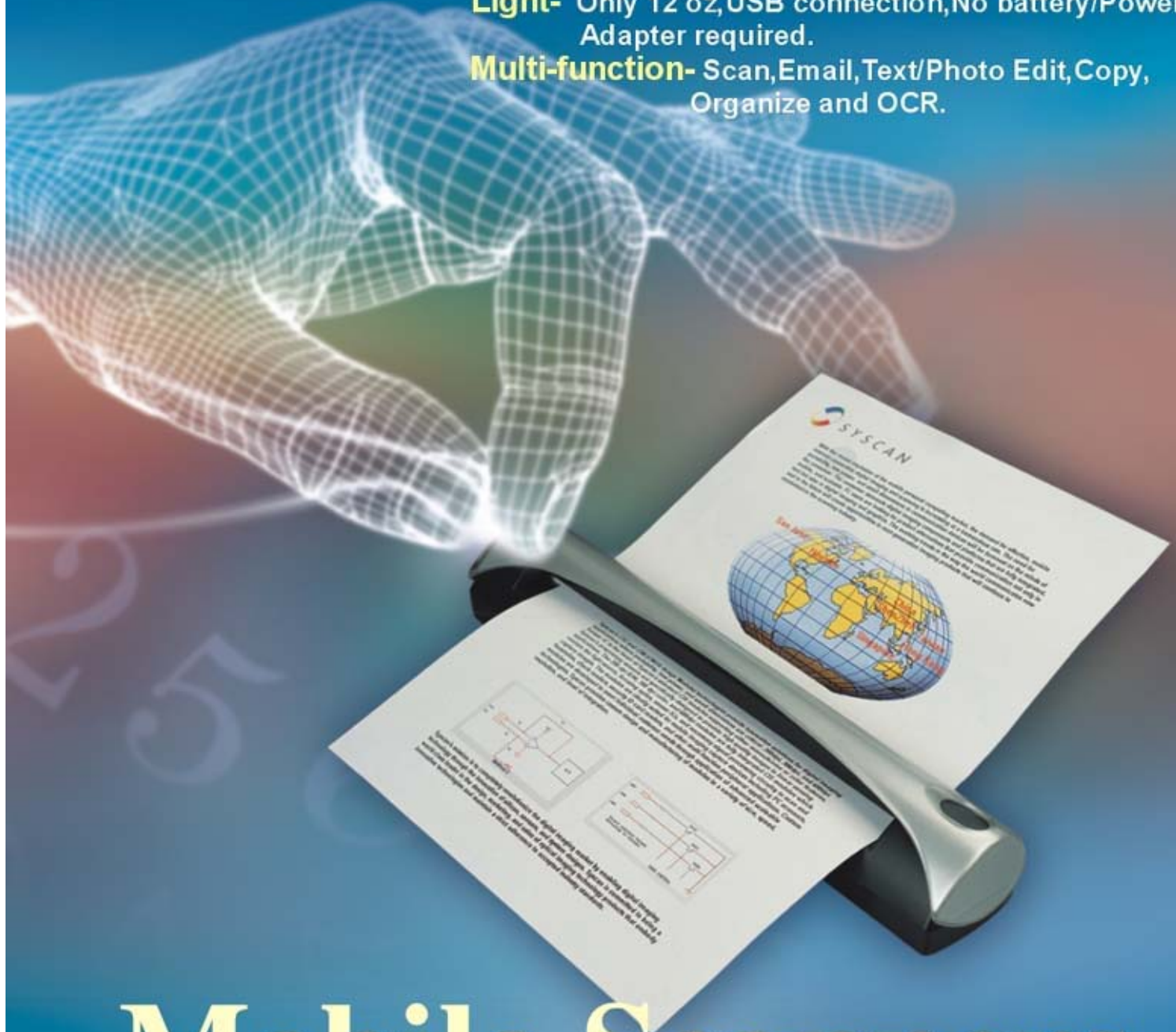


- Easy-** Setup and Installation
- Fast-** Quick Launch Button Reduces Scanning Time
- Small-** Uses 90% Less Space Compared to a Flat-Bed Scanner
- Light-** Only 12 oz, USB connection, No battery/Power Adapter required.
- Multi-function-** Scan, Email, Text/Photo Edit, Copy, Organize and OCR.



Mobile Scanners

Scan Anytime, Anywhere

Documents, Photos & Business Cards

TravelScan® 464



USB 2.0 Compliant
600 x 1200dpi Optical Resolution

Scan Anytime, Anywhere

Mobile Scanners

Documents, Photos & Business Cards

Specifications-of-Scanner

- Image sensor: Linear, Color CMOS
- Optical Resolution: 600 x 1200dpi
- Interface: USB 2.0 Compliant
- Imaging Standard: TWAIN compliant
- Power consumption: USB Powered
0.2W stand-by, 0.2W during scanning
- Scanning Area:
Business card up to legal document
A4, maximum 8.5"×14" (216mm×356mm)
- Scan Speed:
3 pages per min. B&W
1 page per min. Color
- Scan Modes: Internal 42-bit,
outputs 24-bit true color,
8-bit gray scale, 1-bit black and white.
- Paper Thickness: 0.1mm~0.6mm
- Paper Sensor: Optical sensor



Dimensions-of-Scanner

- L×W×H: 11.5"×2.0"×1.7"
(292mm×51mm×43mm)
- Scanner weight: 11.8 oz (335 Grams)

Windows® 98,2000,XP compatible

The following U.S. Patents and others apply to Syscan's Mobile Scanners Technology:

- 6,275,309 Lightweight Mobile Scanners
- 6,459,506 Lightweight Dual-mode Mobile Scanner Powered from a Universal Serial Bus port
- 6,054,707 Portable Scanners Capable of Scanning both Opaque and Transparent Materials

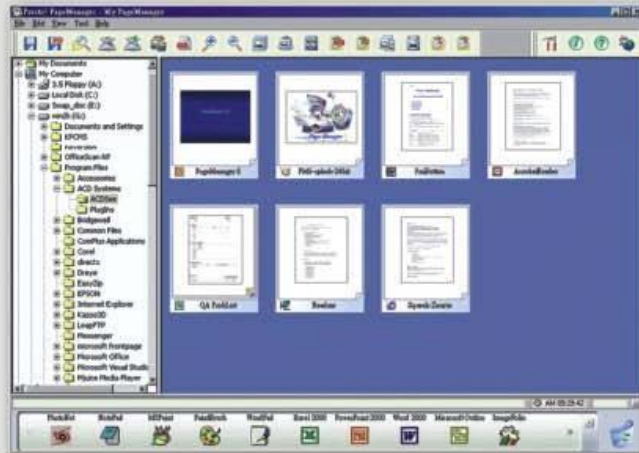
TravelScan® 464



Presto! PageManager® 6.0

A Complete E-solution for Digital Document Management!

Easily scan, share and organize all of your photos and documents with this new-generation "Scanning OS". It automatically links to over 100 popular installed applications on your hard drive saving time and resources.



Key Features

- Manage both digital and non-digital documents, including image files, Microsoft Office documents, and PDF documents.
- Save in PDF file format for distribution.
- Organize associated files for simultaneous mouse-click opening.
- Supports all users in Windows® XP environment.



Centrafest Technologies (M) Pte. Ltd.
OFFICE NO 16/4, Plot No- X -16,
'Centrafest House',Gr. Floor,
Opp. Swati Bldg. (RM - 75),
MIDC, Dombivli(E), THANE - 421203.
TeleFax: 0251 (95251) 2441672 / 2454689
E-Mail : support@centrafest.co.in
URL : http://www.centrafest.co.in